

“Spookie” by Betty Bowers

Palette: DecoArt Americana

Black, White, Georgia Clay, True Ochre, Milk Chocolate, Hauser Med Green, Hauser Lt Green, Plantation Pine, Russet, Burnt Umber, Cocoa
DecoArt Matte Spray Sealer or sealer of your choice.

Brushes: Artist Club 800-845-6507

Shader #2, #6, #8

Angular ¼”, ½”, ¾”

Script 18/0

Royal: Series 4050 Majestic Stippler #12

Surface: Wood cut out: Betty Bowers

bettybowersdownhome.com

Additional Supplies:

Basic painting supplies

Tracing paper

19 gauge wire

Sand paper

Paint tray

Grey graphite

Raffia

Betty Bowers Down Home

1928 Bayspring Rd

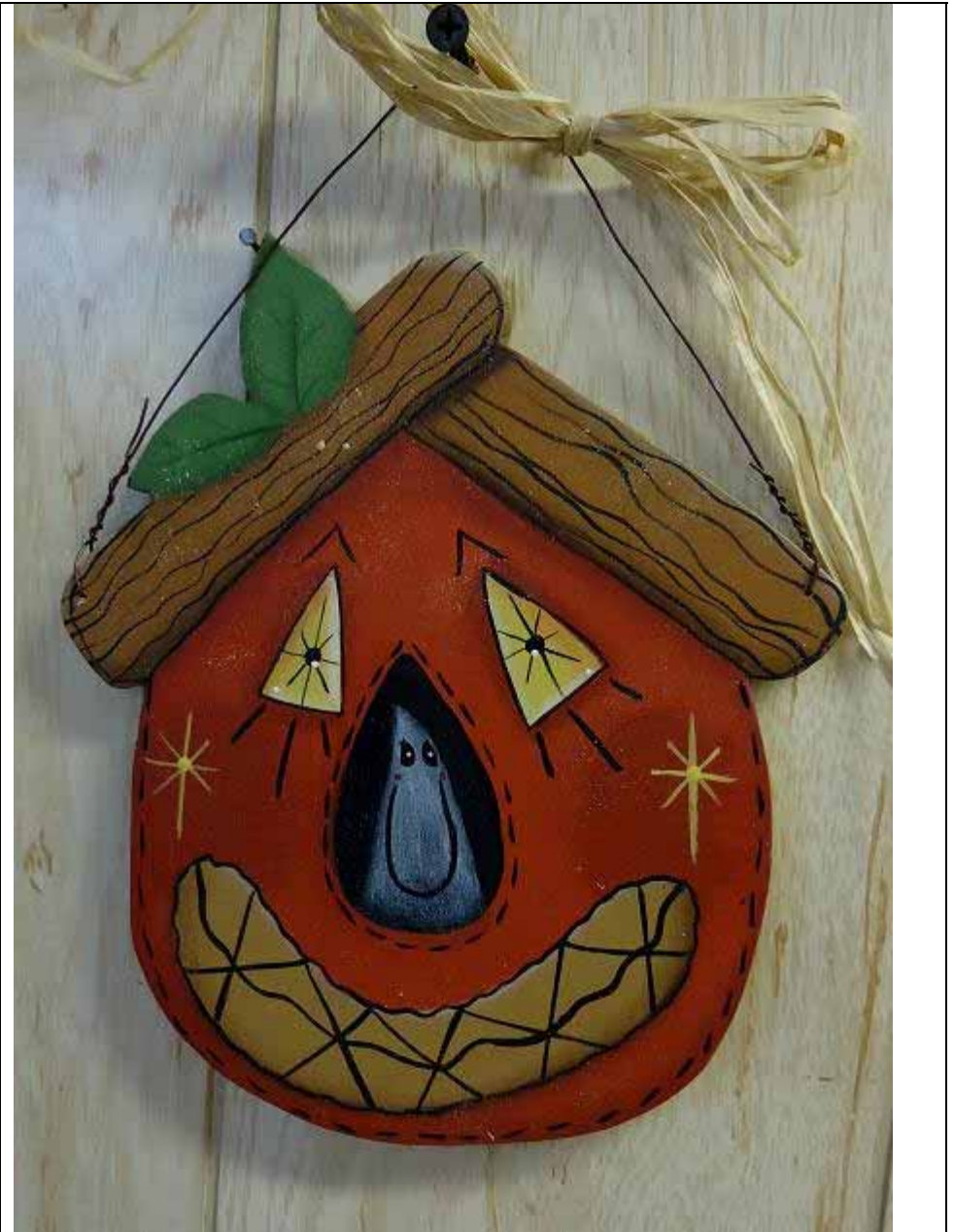
Heath Springs, SC 29058

803-286-5505

bettybowersdownhome.com

© Copyright 2010 Betty Bowers

You may paint from this pattern for pleasure or profit but the design and instructions may not be reproduced in any way whatsoever without express permission of the author. All rights reserved. John 3: 16-17



Wood cutting instructions:

Cut from ½” or ¼” wood. Drill holes for hanging. Sand and remove dust.

Painting instructions:

Basecoat leaves with Hauser Med Green. Shade with Plantation Pine. Highlight with Hauser Lt Green. Paint the veins with Plantation Pine.

Basecoat roof with Milk Chocolate. Shade with Burnt Umber. Paint the squiggle lines with Black.

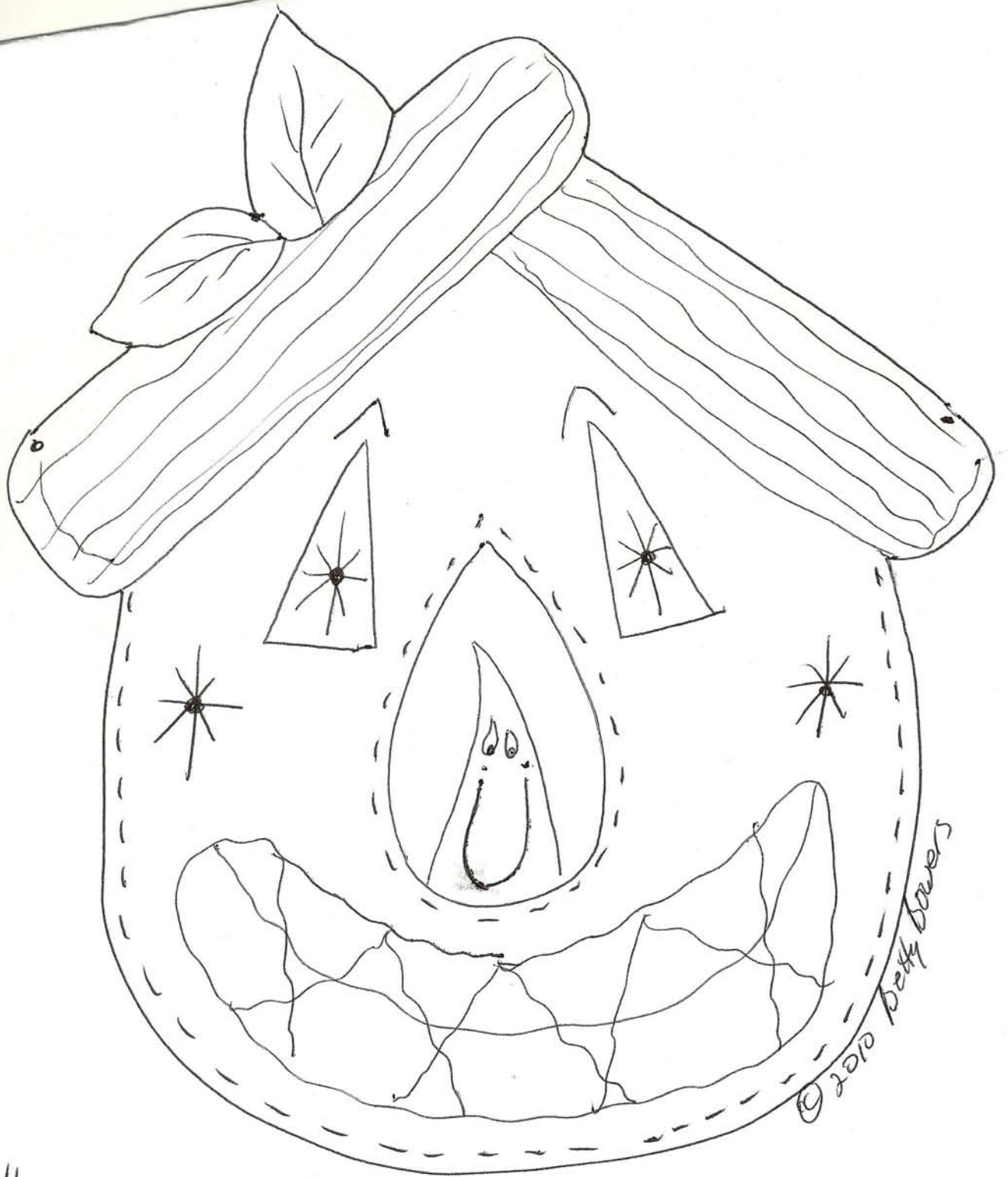
Basecoat the face with Georgia Clay. Shade with Russet and dry brush the cheeks. Paint the eyes with True Ochre. Shade with Milk Chocolate. Highlight with White. Outline and paint the details with Black. Add White highlight dots.

Basecoat the nose with Black. Dry brush the ghost with White. Paint face details and stitching around nose with Black.

Basecoat the mouth with Cocoa. Shade with Burnt Umber. Paint the lines with Black.

Paint the stars on cheeks with True Ochre.

Finishing: Spray with sealer two or three coats. Hang with wire and add raffia bow.



© 2010 Beth Bowers

"Spookie"